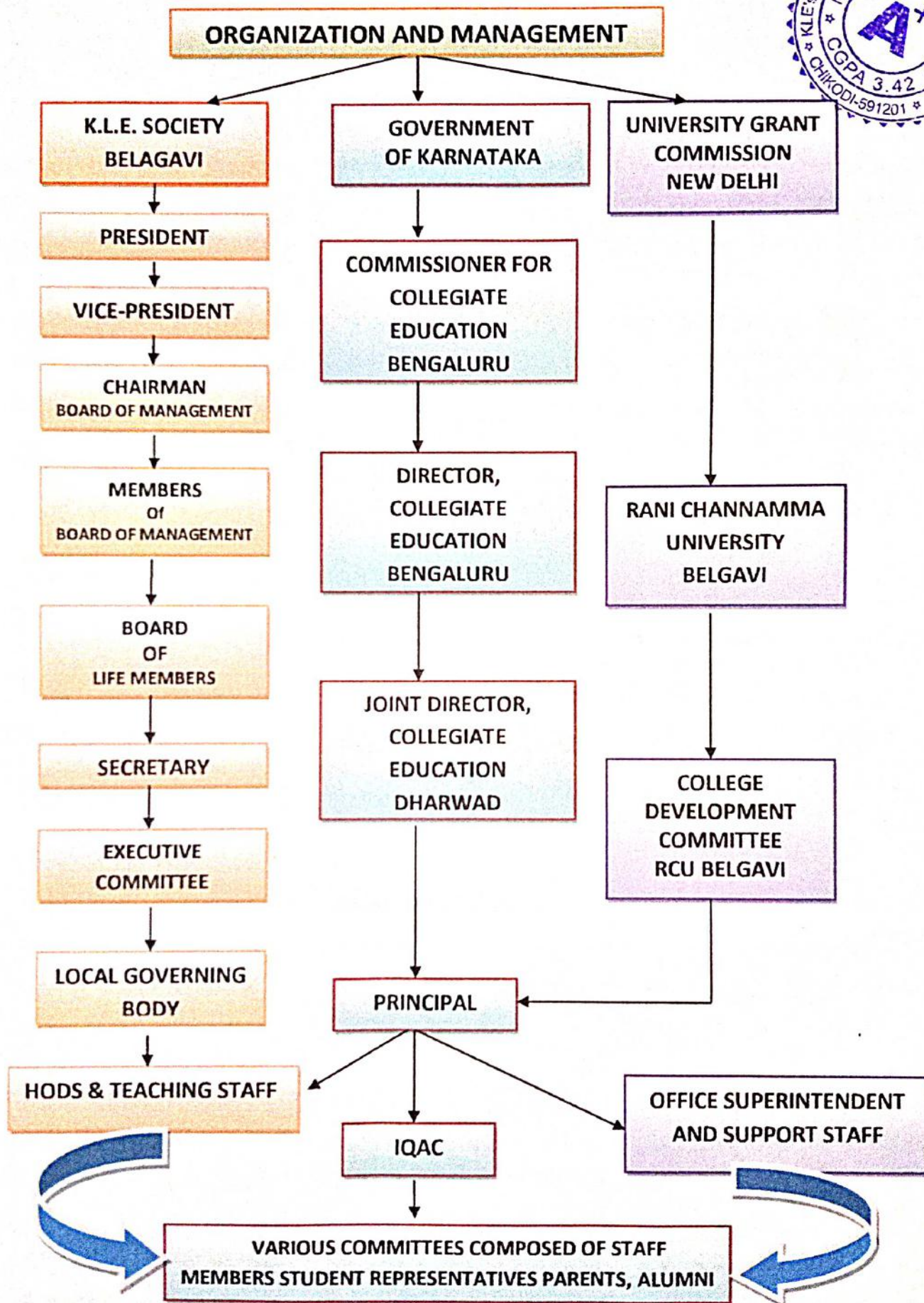


ORGANOGRAM OF THE INSTITUTION





COMMITTEES

| ADMINISTRATIVE | ACADEMIC | EXTRA-CURRICULAR |
|---|----------------------------------|-----------------------------------|
| Admission Committee | Curricular Aspect Committee | Sports & Athletics Committees |
| Discipline Committee | Teaching Learning and Evaluation | NSS Advisory Committee |
| UGC & Purchase Committee | Time-Table Committee | NCC Advisory Committee |
| Building Committee | Examination Committee | Extension Activities Committee |
| Campus maintenance Committee | Research Committee | Sexual Harassment prevention Cell |
| Anti Ragging Cell | Various Co-curricular Committees | Grievances Redressal Cell |
| Women Empowerment Cell | Library Committee | SC/ST/ OBC/ Minority Committee |
| Placement Cell Career Guidance and Counseling Cell | Attendance Committee | Youth Red-Cross |
| | Internal Complaint Committee | |

IQAOS Coordinator
KLE's Basavantrayabhu Kore
Arts, Science and Commerce College
 Chikodi - 591 201

PRINCIPAL
KLE's Basavantrayabhu Kore
Arts, Science and Commerce College
 CHIKODI-591 201